



HYBRID
BULKHEAD



*representative images for illustrative purposes only

Whitten® Hybrid Bulkhead

The Whitten® Hybrid Bulkhead is the next generation commercial pool divider, (or bulkhead,) representing the industry's first hybrid bulkhead construction. The hybrid construction delivers an exceptionally durable, low-maintenance design and vastly improved cosmetic appeal.

Competitive Advantage

Along with providing easy relocation of the pool divider, the energy absorbing, flow through design of the Whitten® Hybrid Bulkhead delivers an extremely quiet water surface by allowing a competitive swimmer's bow wave to pass completely through the structure, rather than rebounding.

- Provides for competitive swimming at various lengths
- Energy absorbing, flow through PVC grating design delivers wave quelling effect
 - *Water passes through entire structure – not just at waterline*
- Engineered to reduce wave deflection and wave bounce
- Integrated timing system cable conduit – compatible with all competitive timing equipment systems
- Complies with all competitive rules and regulatory authorities
- Built-in starting platform anchors
 - Recessed lane anchors
 - Includes permanent racing lane targets



Cosmetic Appeal

Above the water line, the Whitten® Hybrid Bulkhead's composite polymer super-structure delivers next-generation structural support with strength and durability, similar to steel with the cosmetic benefits of a composite bulkhead platform and fascia.

- Composite fascia resists staining & discoloration
- Extruded, UV stabilized, PVC decking
- Composite polymer super-structure
 - *Extremely rigid construction resists flexing or bowing*
- Integrated composite waterline handholds and trim panels



Ease of Use

The combination of technologies delivers the best benefits for ease of use. A composite super-structure above the waterline ensure that the Whitten® Hybrid Bulkhead is very easy to maintain, while flow through grating and buoyancy technology makes repositioning the bulkhead easy.

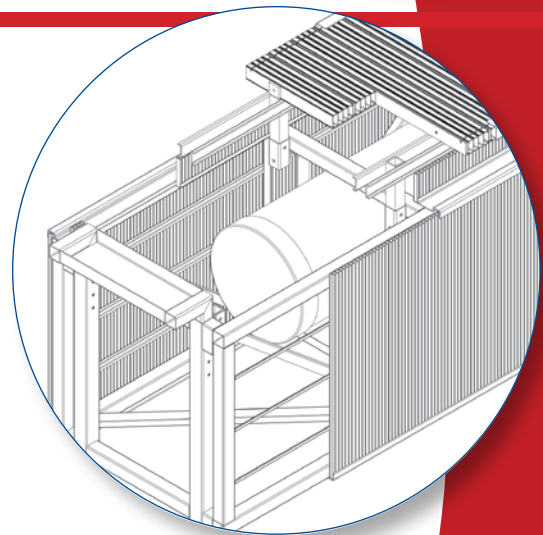
- Variable and fixed buoyancy for maximum programmability
 - *Variable buoyancy for ease of movement*
 - *Fixed buoyancy for maximum stability*
- Top to bottom vertical PVC grating maximizes ease of bulkhead movement



Construction

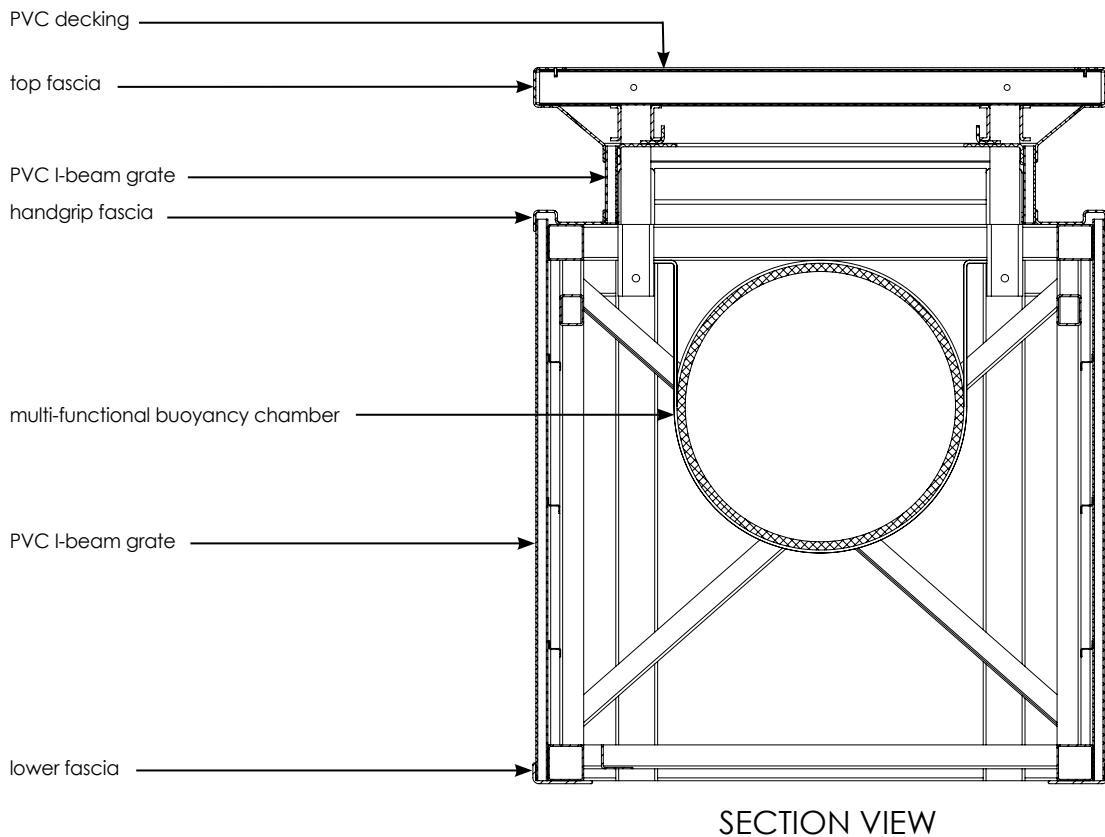
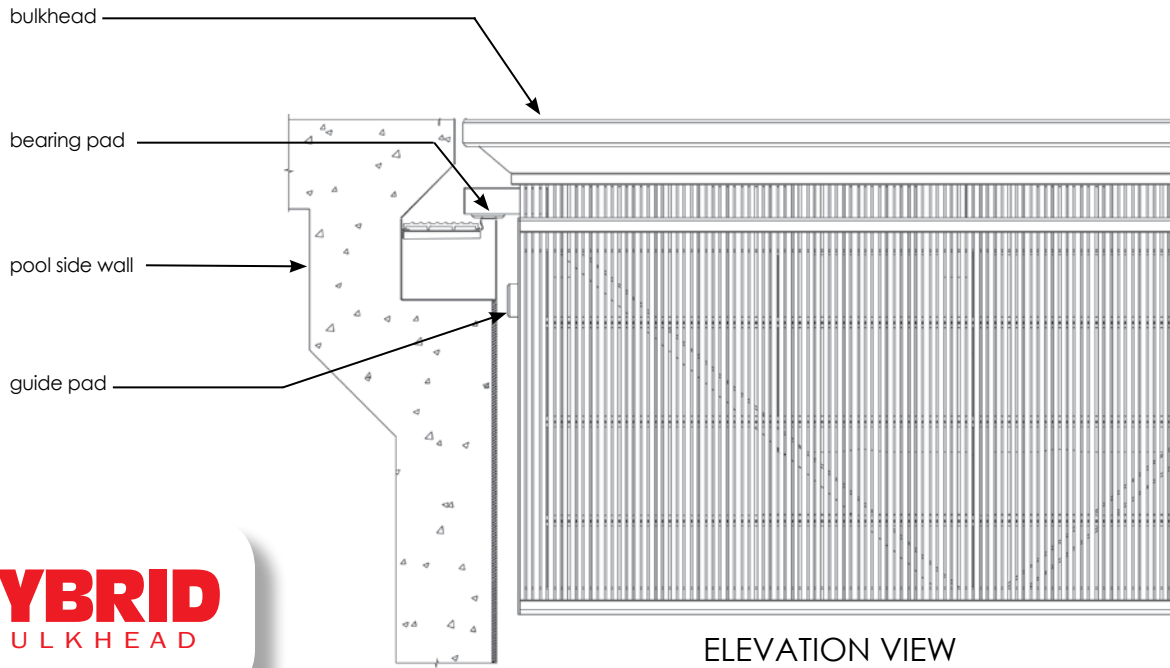
Below the waterline, the Whitten® Hybrid Bulkhead is constructed using a time proven stainless steel box-truss structure, delivering unparalleled strength, rigidity and durability. Above the waterline, a state of the art composite super-structure is integrated into the stainless steel sub-structure below, extending strength and durability while setting a new standard in cosmetic longevity for the visible structure.

- T304L low carbon stainless steel sub frame
- Composite polymer super-structure
- Integrated PVC ballast tank
- Adjustable ballast valves allow buoyancy to be fine-tuned for precise placement and stability
- Integrated locking pins



WHITTEN®

An Aquatic Development Group, Inc. owned company



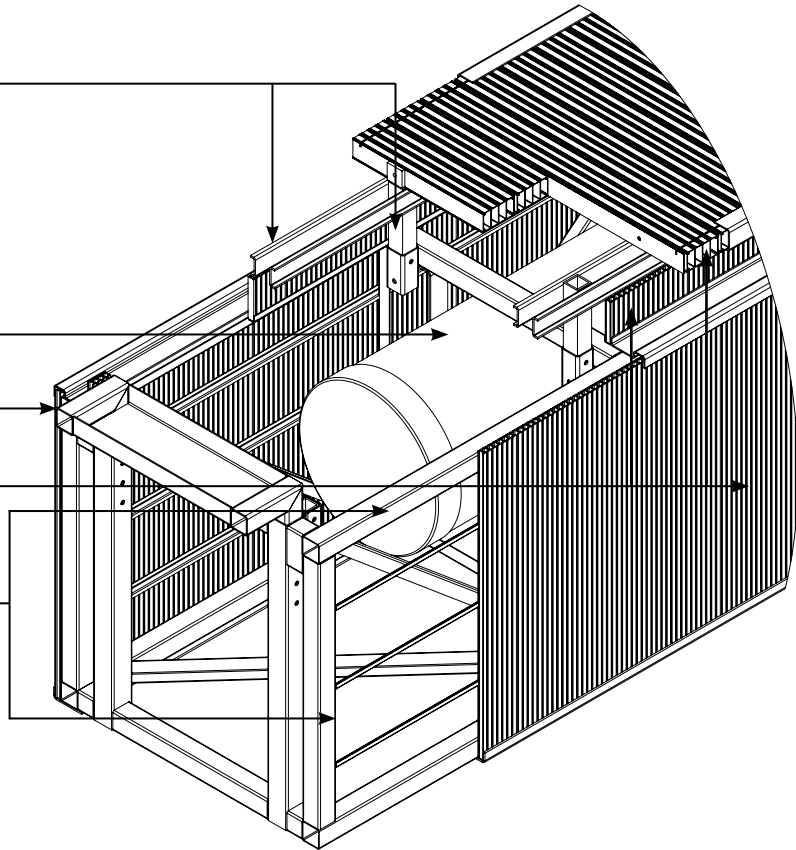
composite
super-structure

multi-functional
chamber

load transmitting
assembly

PVC
grating & decking

stainless steel truss
sub-structure



PVC decking

top fascia

composite
super-structure

load transmitting
assembly

multi-functional
chamber

polymeric
grating & decking

guide pads

end fascia

stainless steel truss
sub-structure

